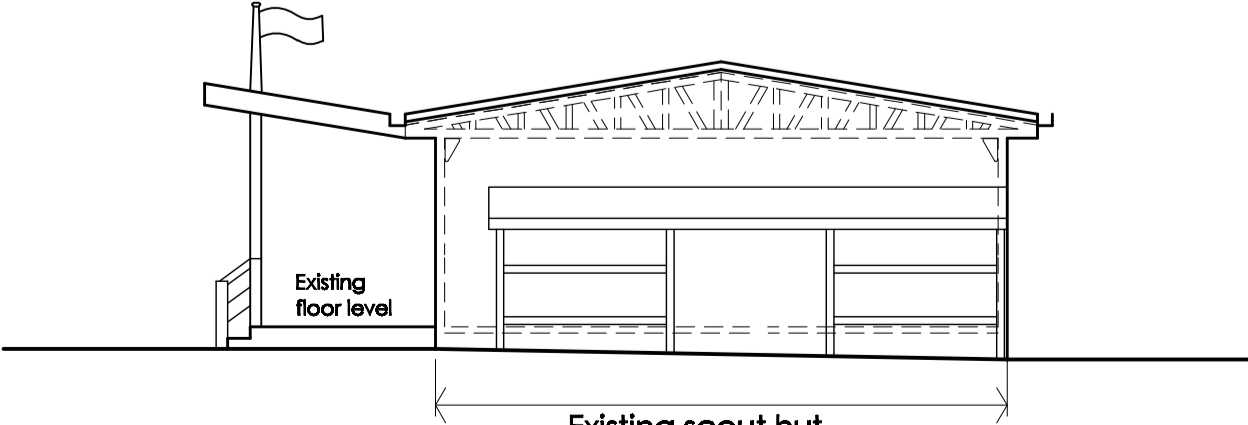
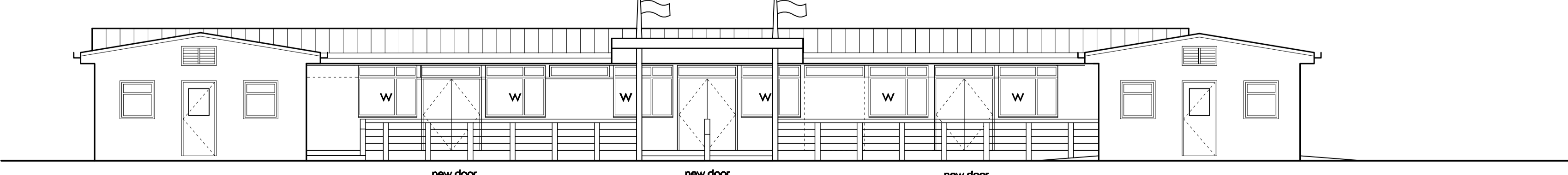


Plan

Elevations



Section through Proposed Porch



Proposed South Elevation

Rev D March 2010
Amended following meeting with Scout Leaders on 16th March 2010

Rev D March 2010
Amended following meeting with Scout Leaders on 2nd March 2010

Rev C Feb 2010
Facilities wing relocated and rearranged to adjoin end of existing scout hut.

Rev A Nov 2009
A number of barrack hut windows omitted and the kitchen enlarged.

PLEASANCE HOOKHAM & NIX
Building Surveyors & Architects
1 Northampton Street
Cambridge
CB3 0AB
TEL: 01223 358440 FAX: 01223 369999

Client:
The Perse School

Project:
Scout Hut Improvements - Existing hut and new units

Title:
Plans

Scale: 1:100 Date: Nov 2009
Job No. 3862 Drawing no. 09 Revision E